

A vertical strip on the left side of the image showing a detailed wooden texture, likely oak, with prominent grain patterns and natural color variations.

*kalogridis*  
wood creations  
since 1967

Wooden frames, doors, special constructions

*kalogridis*  
wood creations  
since 1967

6

Wooden products

Projects Balcony Doors Shades Windows Interior Doors Exterior Doors	Gates Pergolas Stairs Kitchens Closets Special Constructions
--	---

124

ABOUT KALOGRIDIS

The Company Facilities Certifications Technical specifications	Guaranties Frame & Door Efficiency
---	---------------------------------------



## The construction department of I. KALOGRIDIS SA

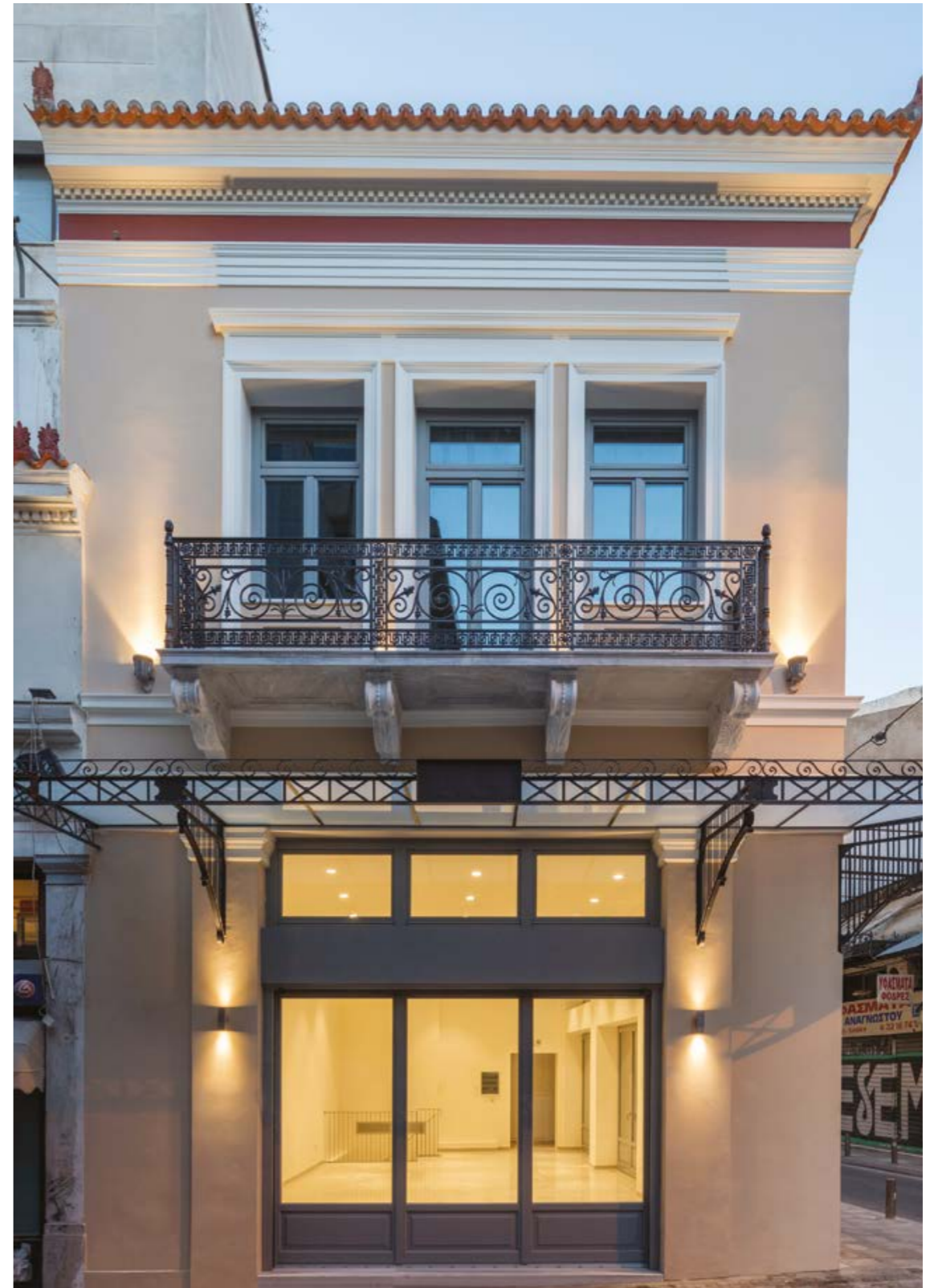
- Thirty years experience of the construction department.
- A team dedicated to architects and technicians.
- We produce en masse production or personalized products, designed to meet the needs of the customer and the project.
- We collaborate with architects and designers.
- Integrated services and project planning, advisory and financial budgeting, order processing, transportation, installation and after-sales services.
- The technical staff is updated daily and is always available for professionals.
- After-sale assistance and maintenance.

# Projects



Retail store in the centre of Athens

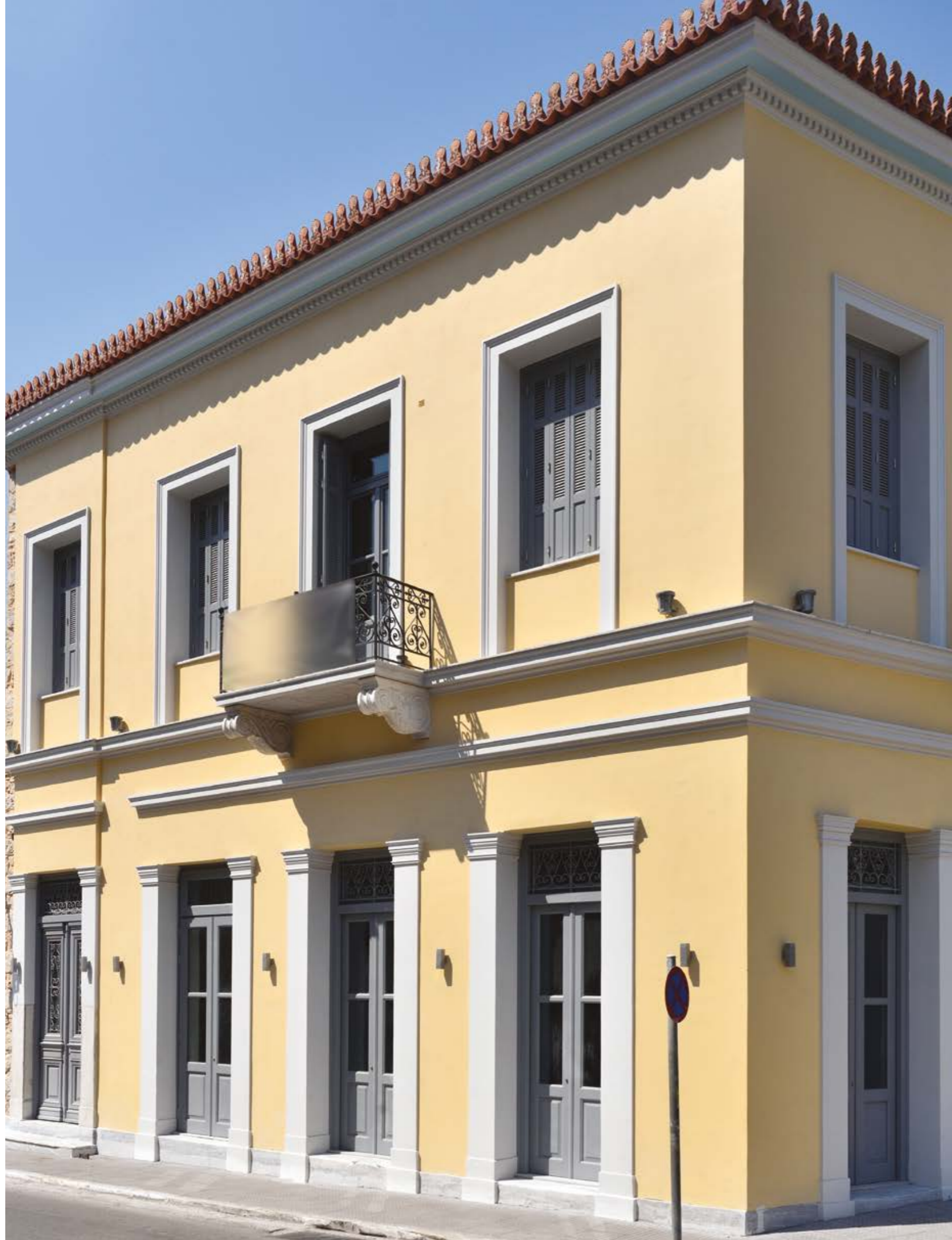
Built with NIAGON wood.





### Retail store in the centre of Athens

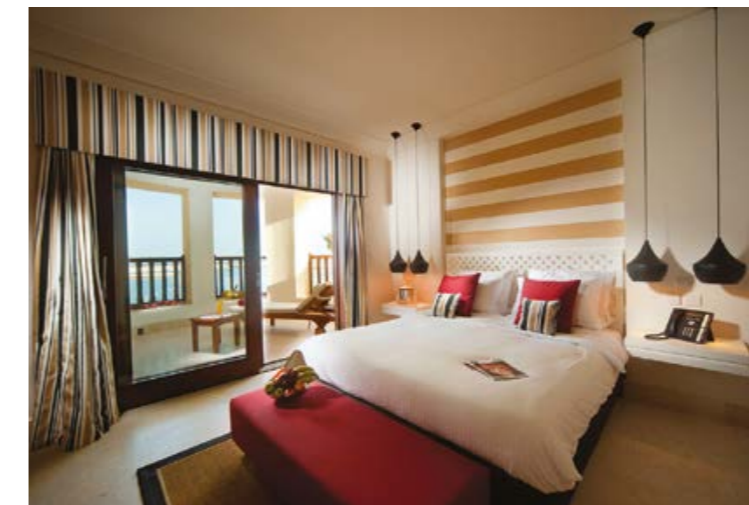
We built wooden frames with NIAGON wood.



RESIDENCE / Athens



JUWEIRA BOUTIQUE HOTEL / Oman



JUWEIRA BOUTIQUE HOTEL / Oman





CAVO TAGOO HOTEL / Santorini



CAVO TAGOO HOTEL / Mykonos



CAVO TAGOO HOTEL / Mykonos



RESIDENCE / Spetses



SUMMER SENSES HOTEL / Paros



SUMMER SENSES HOTEL / Paros



SUMMER SENSES HOTEL / Πάρος



RESIDENCE / Nafplio





MYST HOTEL / Santorini





RESIDENCE / Santorini



RESIDENCE / Santorini





RESIDENCE / Santorini



# Wooden Products/ Kitchens

Balcony Doors  
Shades  
Windows  
Interior Doors  
Exterior Doors  
Gates

Pergolas  
Stairs  
Kitchens  
Closets  
Special Constructions



Traditional front door.



NIAGON wood double-glazed windows with French lites design and a reclining skylight at the top.



One-sided frame of 10.5 x 10.5 cm special section type NIAGON.



Two-sided, double-glazed door with electric aluminium roller blind and electric vertical movement concealed screen.





Bellows balcony door.



Balcony door with dashboard and French lites design on the top.



Quadruple split shutters with French blind design.



Exterior face of a balcony door with French lites design.



Electric sliding balcony door.



Quadruple bellows balcony door with banner design.

Special mechanism with heavy-duty roller for bellows opening.



















Rotating frame







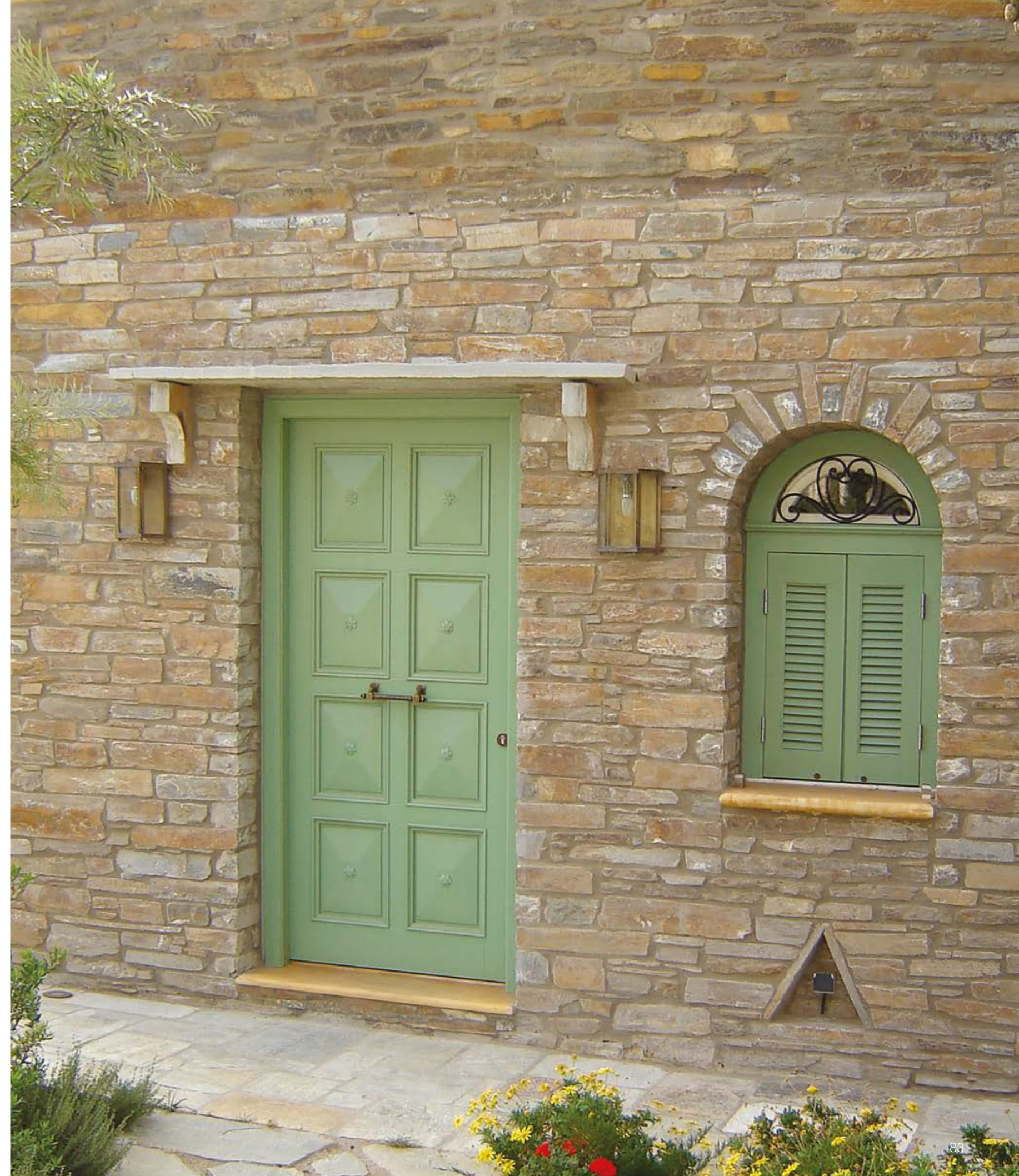
















































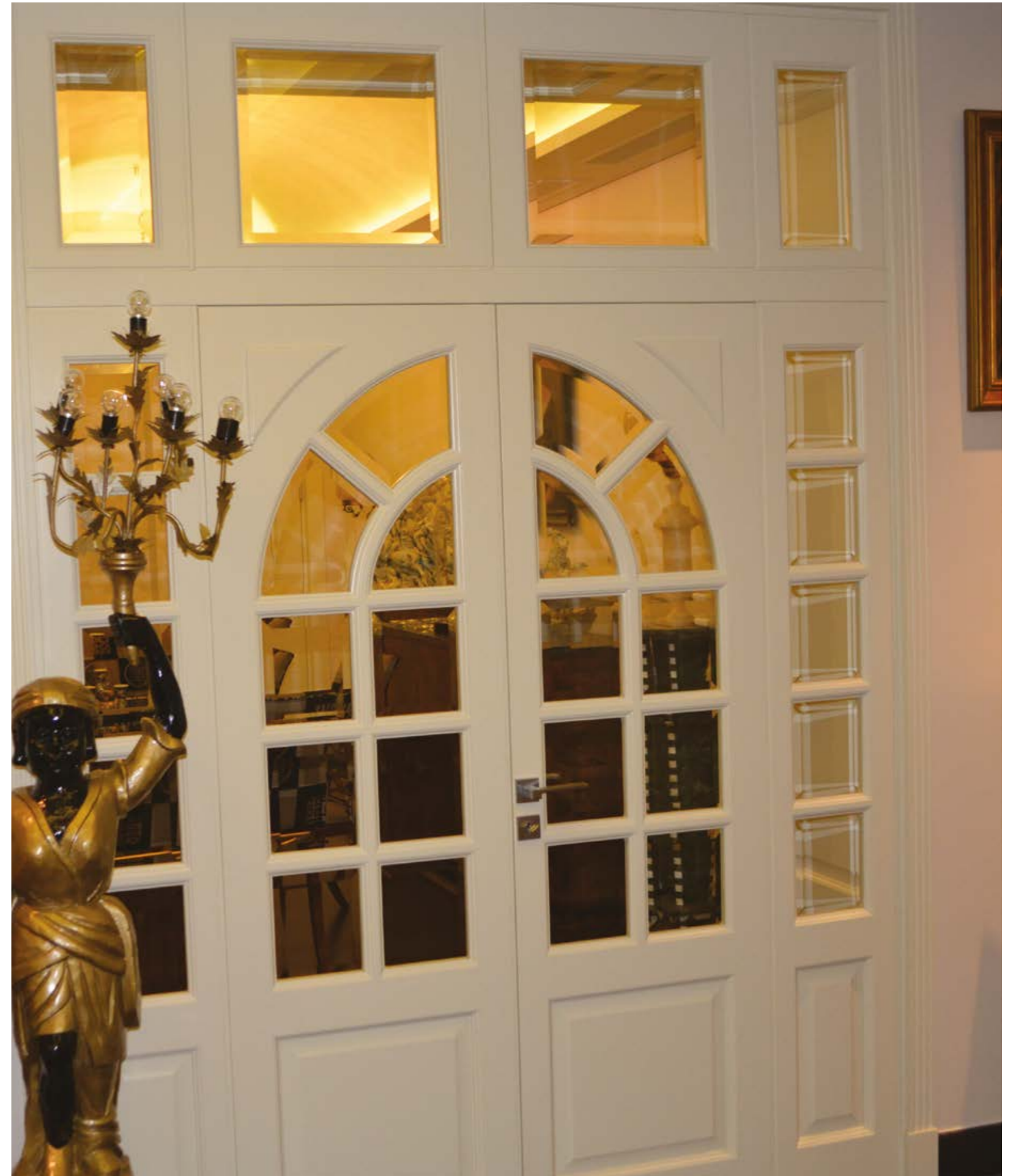




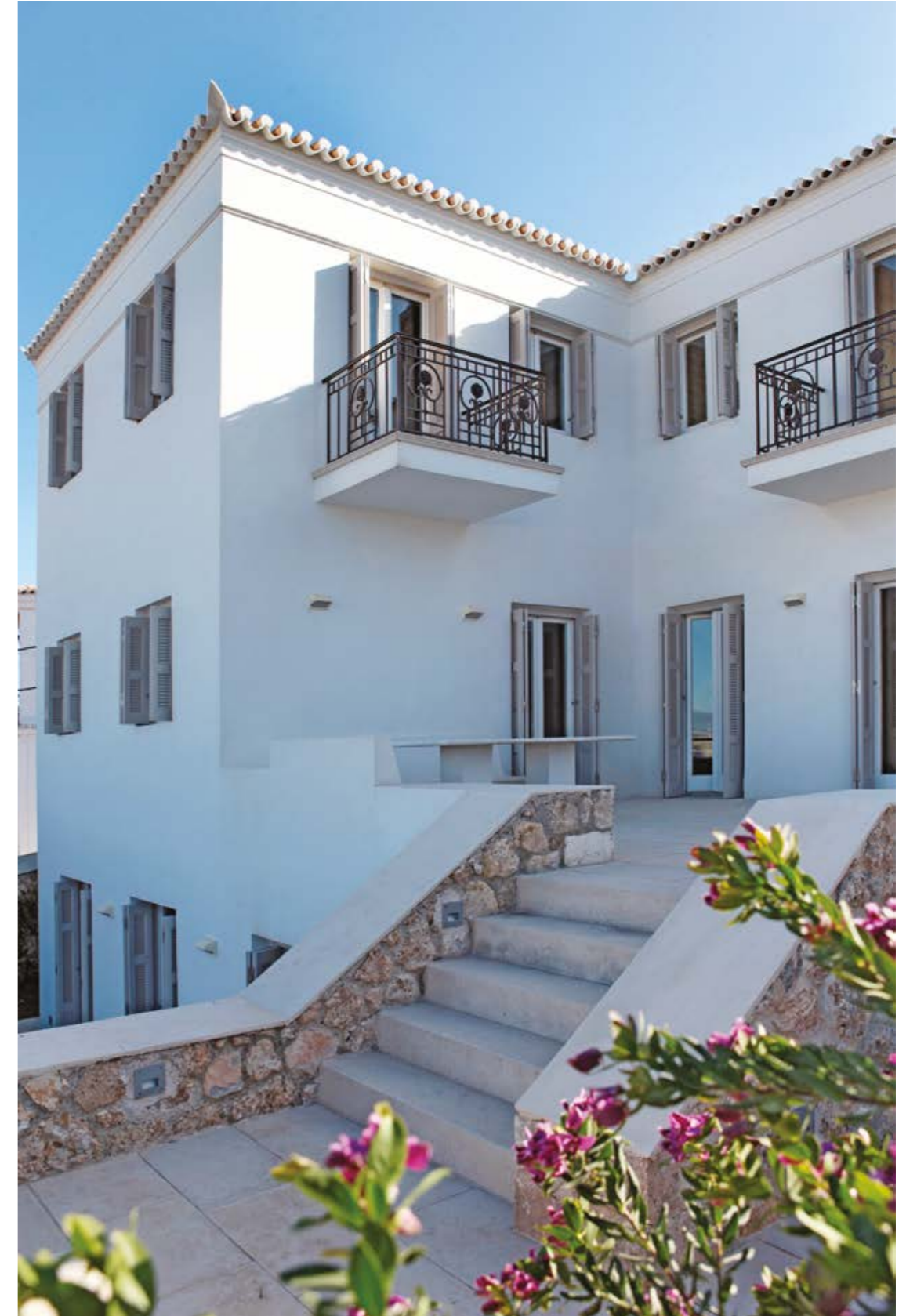






















# • The Company

I. KALOGRIDIS S.A. was founded in 1967, as a pilot unit of production of wooden frames and shutters. The specialisation in the production of wooden frames and shutters has directed the company to design and manufacture a wide variety of wood related products (door and window frames, shutters, doors, pergolas, wooden panelling, furniture, etc). Projects of superior design –such as residences, hotels, neoclassical and heritage buildings– are steadily reaffirming the credibility of I. KALOGRIDIS S.A., while the continuous involvement of the company with important undertakings proves its constant development and its ability to adapt to new requirements.

The company's major point of reference is the wishes and needs of each individual client. In this context, particular attention has been given in providing high-tech solutions and innovative applications –which reflects to the modern facilities and the sound equipment.

Quality and aesthetics are the fundamental requirements, the pivot around which the products are designed and manufactured, ensuring at the same time the best quality/price ratio, reliable service and integrated after sale services.

Indeed, the quality is not limited to the products but it is expanding to the services provided, even after the sale is concluded. The company ensures the timely and proper installation of the products, and also provides guidance for their usage and maintenance.

Additionally, the quality of the products is certified by IFT Rosenheim institute, a Europe-wide organisation to measure, observe and certify, internationally accredited according to the DIN EN ISO/IEC 17025. The certification of quality is grant-

ed after tests and evaluation at the Rosenheim institute's research laboratories. This quality control guarantees the technical specifications of the products as well as the monitoring of their quality, even after the certification has been granted. Furthermore, the inspection of outdoors frames and shutters includes all the major controls of standard properties for the acquisition of CE Marking.

An additional major priority of I. KALOGRIDIS S.A., is the respect towards the natural environment. All the products are made of wood, which is considered to be the most environmentally-friendly material, as it is characterised by negative carbon dioxide emissions.

The timber used by I. KALOGRIDIS S.A. is accredited by the two major accrediting international bodies for the proper management of forest land, the F.S.C. (Forest Stewardship Council) and the P.E.F.C. (Programme for the Endorsement of Forest Certification).



# Certifications

## IFT Rosenheim

The quality of KALOGRIDIS products is certified by the Rosenheim IFT Institute, the European Organization which is internationally accredited with the DIN EN ISO / 9001, concerning measuring, observation and certification. The specific control guarantees the technical specifications of the products, as well as the observation of their quality, even after the accreditation, prior to which testings and evaluations at the Rosenheim research laboratories are carried out.

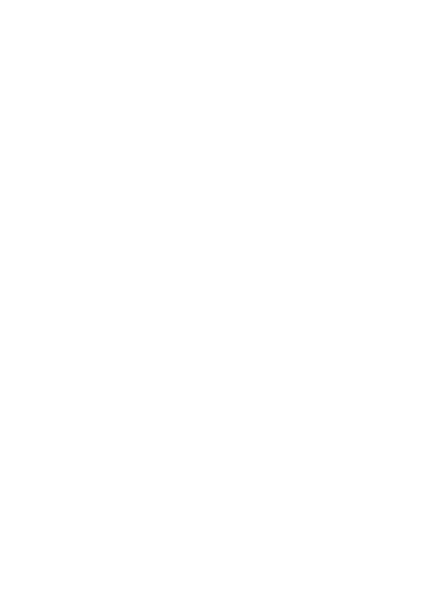
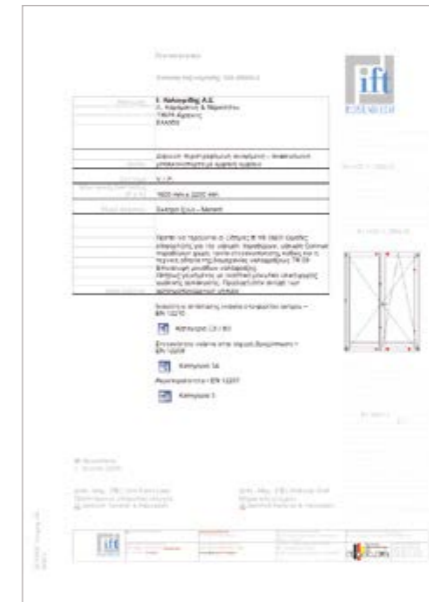
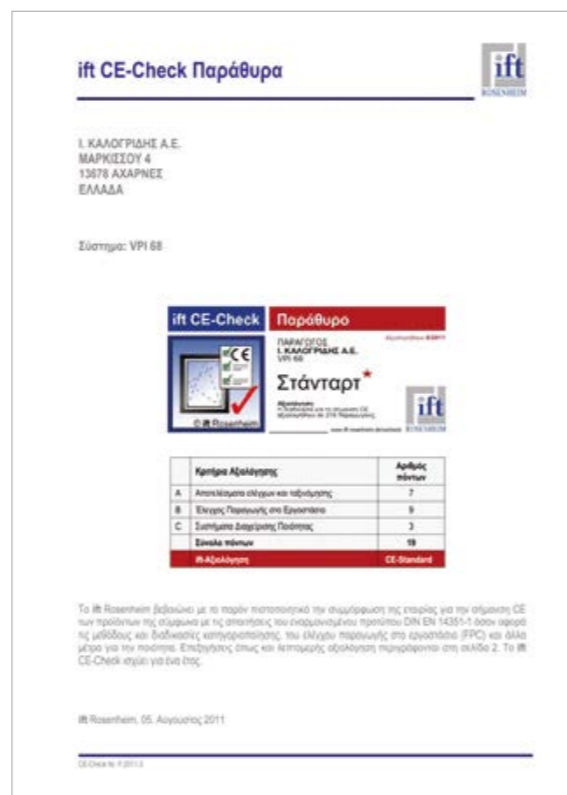
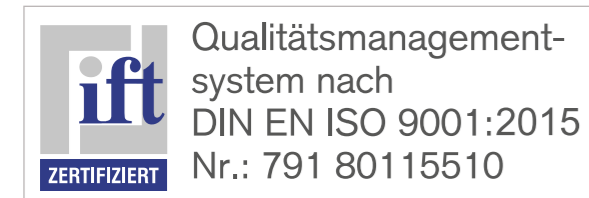
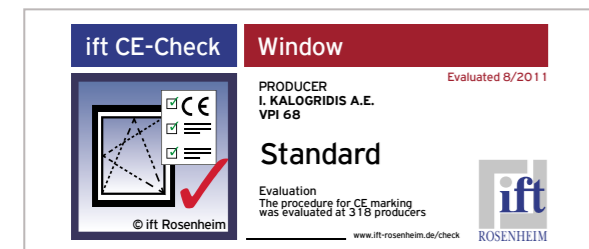
(\*) Certifications concern:

Balcony doors

Balcony doors with shutters

Wooden windows

External Doors



# Technical Specifications

### Timber

Frames are manufactured by specially selected timber - MER-ANTI, NIAGON, IROCO, OAK, BEECH, ACCOYA - which is industrially and thermally processed, complies with all technical specifications (on humidity, density etc.) and covers all sorts of specifications.

Frame profiles are made of industrially processed and manufactured timber. The use of this kind of timber manages to eliminate any possible technical issues, wood distortions while all products are truly stable. In this way, all frames are characterized by the best possible quality and resistance in time.

### Painting

To prevent dampness and for the excellent finishing of our constructions, we use the REMMERS and ADLER oil dyes of excellent quality, with demanding specifications. They are distinguished for their long-lasting durability in the most severe weather conditions due to their high elasticity and excellent protection with UV filters. Also, due to their high water content, they can be classified as fire resistant, odourless, non-toxic, waterproof, resistant to distortion and contraction - expansion.

### Painting stages

For our frames we use an electrostatic paint system, inside the ultra-modern robotic dye of international specifi-cations. The advantages of electrostatic dye are the high quality as well as the homogeneity even at the most inaccessible points of the frame. We use sophisticated dyeing materials, especially adapted to the Mediterrane-an and particularly to the Greek sunshine conditions.

The dyes are fully certified. The painting steps we follow are the most suitable for painting exterior frames, and are as follows:

- First step of soaking with fungicides, preservatives and colour, with the process of sprinkling (FLOW-COATING).
- Drying in special heaters for one hour.
- Primer - second stage of sprinkling.
- Brushing by skilled craftsmen.
- Electrostatic painting from a robotic machine, with water-solu-ble materials (dyes and varnishes), with a ROUND ABOUT sys-tem exclusively designed for our company.
- Drying in the special heaters.
- Quality control.

The above painting process is carried out under perfectly controlled ambient conditions, both in terms of tem-perature and humidity, ensuring the quality and durability of the produced products.

### Mechanisms-Glasses-Rubber bands

The mechanisms we use in our frames come from Germany's distinguished companies, which are able to cir-cumferential-ly lock at multiple points. Our frames are sealed with rubber bands placed circumferentially from the frame to special shoul-ders, thus safeguarding against any possibility of loss of heat-ing, contributing to the better sound insulation. SUN-ENERGY or TRIPLEX or K-GLASS glass panes, Europe-an, double, thermo and sound insulating, which within their spread contain Argon gas for protection from ultraviolet rays.

### Adhesives

Our adhesives are EN204/205 certified with moisture and heat resistance according to EN14257 (watt 91), (ift Rosenheim).

# Guaranties

All «I. KALOGRIDIS - WOOD APPLICATIONS SA» products are manufactured at the company's plant and are thoroughly controlled so as quality and operation standards to be the highest possible. This guarantee is valid from the product purchase date and concerns only the first buyer/user. Also, the guarantee covers the entire order described at the re-spective sales invoice or receipt.

More specifically, the following are provided:

- 25year guarantee for the wooden part of any construction
- 10year product functionality guarantee
- varnish endurance guarantee, as indicated in the RSG maintenance log

Guarantees are totally valid, as long as products do not form part of a special construction. Guarantee covers exclusive-ly the construction defects which affect the frame flawless operation and paint damage (in case of exceeding the maxi-mum permissible limits).

Guarantee covers the free of charge replacement or repair of any defective components, apart from the charge of a fixed amount concerning the call and intervention at the client's building site, according to the current price list.

Guarantee does not cover product damages caused by their not appropriate or indicated usage, such as inappropriate usage or partial component(mechanisms) usage beyond their specifications, force majeure unforeseeable factors or damages caused by natural disasters (earthquakes or fires etc), incidents that may occur after the installation comple-tion by the company technicians, special weather conditions or exposure to intense corrosive natural environments such as: zones up to 200m from the sea or if it's above 2000m.



# • Frame & door efficiency

Frame design ensures the maximum heat insulation, sound insulation and leakproofness, as well as resistance in air pressure and intense ingress of water. Outdoor windows and doors are made of solid wood and controlled by accuracy machines while the flanges are made of silicone rubber, really resistant to ultraviolet radiation, all along the perimeter of the frame and on the door joints.

Technical efficiency is the result of various parameters such as:

- Window or door size
- Frame
- Wood type
- Glass type

The combination of these elements determines the window or door features concerning the heat and sound insulation, air and water permeability, as well as the distortion prevention from strong winds. In the following table you may find efficiency examples.



## GLASS

Research in glass sector is in constant progress, achieving some great results, concerning the improvement of window and door efficiency in heat insulation. Reference standards: EN 1026 and UNI EN 12207



## AIR PERMEABILITY

This refers to the level that air is allowed to permeate from a closed window into the internal part, in conditions where pressure difference is noted between the inside and the outside. There are 4 categories and the 4th one registers the highest level of protection. Reference standards: EN 1026 and UNI EN 12207



## AIR RESISTANCE

It refers to the capacity of a window, under great air pressure, to maintain its properties without causing any distortions. The highest resistance category to the wind pressure is «C5». Reference standards: EN 12211 and UNI EN ISO 12210



## HEAT INSULATION

The thermal transmittance factor  $U_w$  indicates the heat or cooling energy loss rate from a window or door surface. Reference standard: UNI EN ISO 10077-2



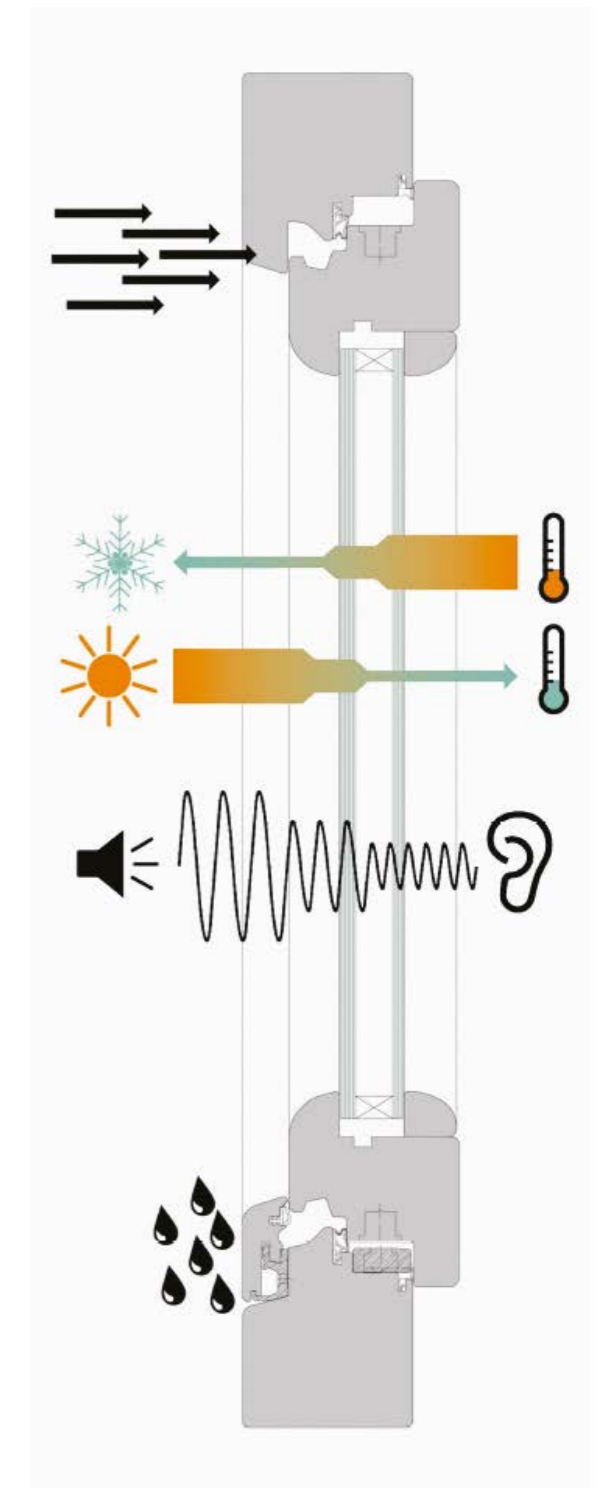
## SOUND INSULATION

It refers to the passive protection against sound, offered by indoor windows or doors. Reference standard: UNI EN ISO 14351-1



## LEAKPROOFNESS

It refers to water leaking prevention from outdoors to indoors. Leakproofness is escalated to 9 categories with the 9th one indicating that the window or door has been constructed in such way that prevents water leaking, in conditions where the wind speed is estimated around 600 Pascal. Reference standards: EN 1027 and UNI EN 12208





*kalogridis*  
wood creations  
since 1967

I. KALOGRIDIS

L.Karamanli Ave. & 4, Narkissou str.  
P.C. 136 78, Acharnes, Athens - Greece  
Tel. +30 210 2405771, +30 210 2460483  
Fax. +30 210 2460494  
email: [info@kalogridis.com.gr](mailto:info@kalogridis.com.gr)  
[www.kalogridis.com.gr](http://www.kalogridis.com.gr)